

2008 Houchens Industries/KHSAA Girls' Sweet 16 - Game Box Score

Rowan County Lady Vikings vs. Breathitt County Lady Cats

Date: 03/12/2008 Time: 1:30 PM CST Site: Diddle Arena, Bowling Green, KY Attendance: 3298

Visitors: Breathitt County Lady Cats

##	Name	P	FG	3 Pt	FT	PTS	ORB	DRB	TR	PF	AST	TO	BS	ST	MIN
4	* Amanda Southwood		5/7	0/1	6/7	16	0	1	1	4	0	3	0	2	23:45
5	Ashley White		0/0	0/0	0/0	0	0	0	0	0	0	0	0	0	DNP
11	* Brittany Haddix		4/8	0/0	5/6	13	1	8	9	3	2	3	1	0	28:49
12	* Kendall Noble		7/10	0/0	2/5	16	5	7	12	2	5	9	5	1	31:33
20	Paige Hamblin		0/0	0/0	0/0	0	0	0	0	0	0	0	0	0	DNP
21	Brianna Deaton		0/0	0/1	0/0	0	0	1	1	0	0	0	0	1	10:01
22	Shania Hollan		0/0	0/0	0/0	0	0	0	0	0	0	0	0	0	DNP
23	Kristin Bowen		0/0	0/0	0/0	0	0	0	0	0	0	1	0	0	0:27
30	* Brittany Hardin		1/2	0/0	1/3	3	0	4	4	3	3	9	0	3	31:33
32	Courtney Fugate		0/0	0/0	0/0	0	0	0	0	0	0	0	0	0	DNP
33	Eden Keeton		0/0	0/0	0/0	0	0	0	0	0	0	0	0	0	1:45
40	Victoria Shouse		0/0	0/0	0/0	0	0	0	0	0	0	0	0	0	0:27
42	Emily White		0/0	0/0	0/0	0	0	0	0	0	0	0	0	0	0:27
53	* Lenae Shouse		3/10	0/0	6/8	12	5	9	14	2	0	2	1	2	31:13
Team							4	1	5						
<b>Totals</b>			<b>20/37</b>	<b>0/2</b>	<b>20/29</b>	<b>60</b>	<b>15</b>	<b>31</b>	<b>46</b>	<b>14</b>	<b>10</b>	<b>27</b>	<b>7</b>	<b>9</b>	<b>160</b>
<b>2 PT FG</b>			1st Half	10/19	52.6%	2nd Half	10/18	55.6%	Game	20/37	54.1%				
<b>3 PT FG</b>			1st Half	0/1	0.00%	2nd Half	0/1	0.00%	Game	0/2	0.00%				
<b>Free Throws</b>			1st Half	4/6	66.7%	2nd Half	16/23	69.6%	Game	20/29	69.0%				

Home: Rowan County Lady Vikings

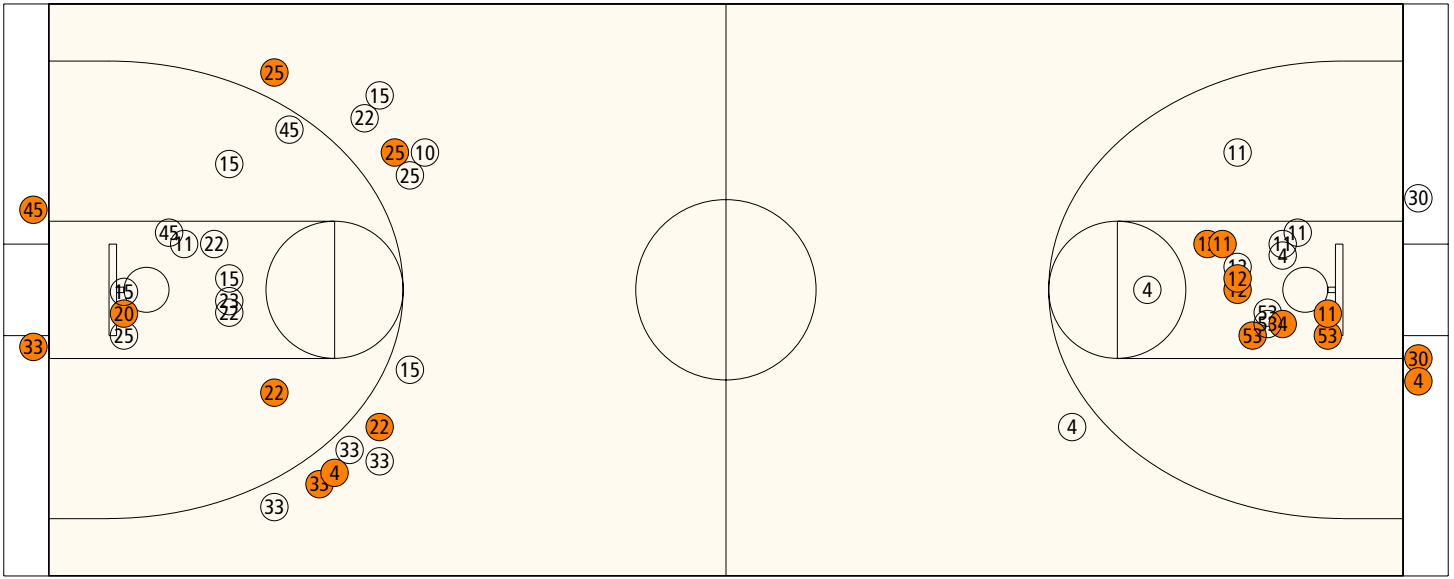
##	Name	P	FG	3 Pt	FT	PTS	ORB	DRB	TR	PF	AST	TO	BS	ST	MIN
3	Tierra Hamilton		0/0	1/1	0/0	3	0	0	0	0	0	0	0	0	0:27
4	Kaitlyn Muncy		0/0	1/1	0/0	3	0	0	0	1	0	0	0	0	4:16
10	Jenna Kiser		0/2	0/1	1/2	1	2	1	3	1	0	0	0	0	8:33
11	Stefanie Howard		0/2	0/1	0/0	0	1	0	1	0	1	0	0	0	9:03
15	* Cassidi Spurlock		2/10	0/5	4/5	8	4	1	5	5	4	2	0	1	27:30
20	* Amber Riddle		2/4	0/2	3/4	7	2	5	7	4	2	0	0	1	27:34
22	* Caitlin Martin		2/4	1/3	1/2	8	1	2	3	3	0	2	0	0	18:18
23	Morgan Hardin		0/1	0/0	0/0	0	0	0	0	1	0	0	0	0	2:11
24	Adri Neeley		0/0	0/0	0/0	0	0	0	0	1	0	0	0	0	0:14
25	* Jennifer Brockman		1/4	2/4	0/0	8	3	1	4	5	2	6	0	6	22:49
32	Keshia McClain		0/0	0/0	0/0	0	0	0	0	0	0	0	0	0	0:27
33	Natasha Kissinger		1/2	1/8	0/0	5	2	0	2	1	0	2	0	4	15:37
35	Krysta Barker		0/0	0/0	0/0	0	0	0	0	0	0	0	0	0	0:27
44	Beth Richmond		0/0	0/0	0/0	0	0	0	0	0	0	0	0	0	0:27
45	* Nicole Barr		3/6	0/0	0/2	6	1	1	2	1	1	0	0	2	22:07
Team							1	0	1			2			
<b>Totals</b>			<b>11/35</b>	<b>6/26</b>	<b>9/15</b>	<b>49</b>	<b>17</b>	<b>11</b>	<b>28</b>	<b>23</b>	<b>10</b>	<b>14</b>	<b>0</b>	<b>14</b>	<b>160</b>
<b>2 PT FG</b>			1st Half	4/14	28.6%	2nd Half	7/21	33.3%	Game	11/35	31.4%				
<b>3 PT FG</b>			1st Half	5/13	38.5%	2nd Half	1/13	7.69%	Game	6/26	23.1%				
<b>Free Throws</b>			1st Half	5/8	62.5%	2nd Half	4/7	57.1%	Game	9/15	60.0%				

	BREAT	ROW		BREAT	ROW		BREAT	ROW
Free Throw Pts	20	9	3Pt Points	0	18	Pts/Possession	0.94	0.75
Pts off Turnovers	12	16	2nd Chance Points	14	5	Pts off Bench	0	12
Total Rebounds	46	28	Team Rebounds	5	1	Dead Ball Reb	2	2
Off Rebound %	57.7	35.4	Def Rebound %	64.6	42.3	Total Rebound %	62.2	37.8
3Pt Efficiency	-36.0	+2.1	Def. Stops	45	38	Pts/Shot	1.13	0.72
Technical Fouls	<b>BREAT</b>	None						
	<b>ROW</b>	None						
Officials	Mark Howell, Ellen Carver, Lance Wilson							

	Qtr 1	Qtr 2	Qtr 3	Qtr 4	OT 1	OT 2	OT 3	OT 4	Total
<b>Breathitt County Lady Cats</b>	16	8	13	23	0	0	0	0	<b>60</b>
<b>Rowan County Lady Vikings</b>	13	15	6	15	0	0	0	0	<b>49</b>

Largest Lead ROW 46 BREAT 60 (14 pts) Lead Changes 10 Number of Ties 3  
 Comments: None

### FIRST HALF



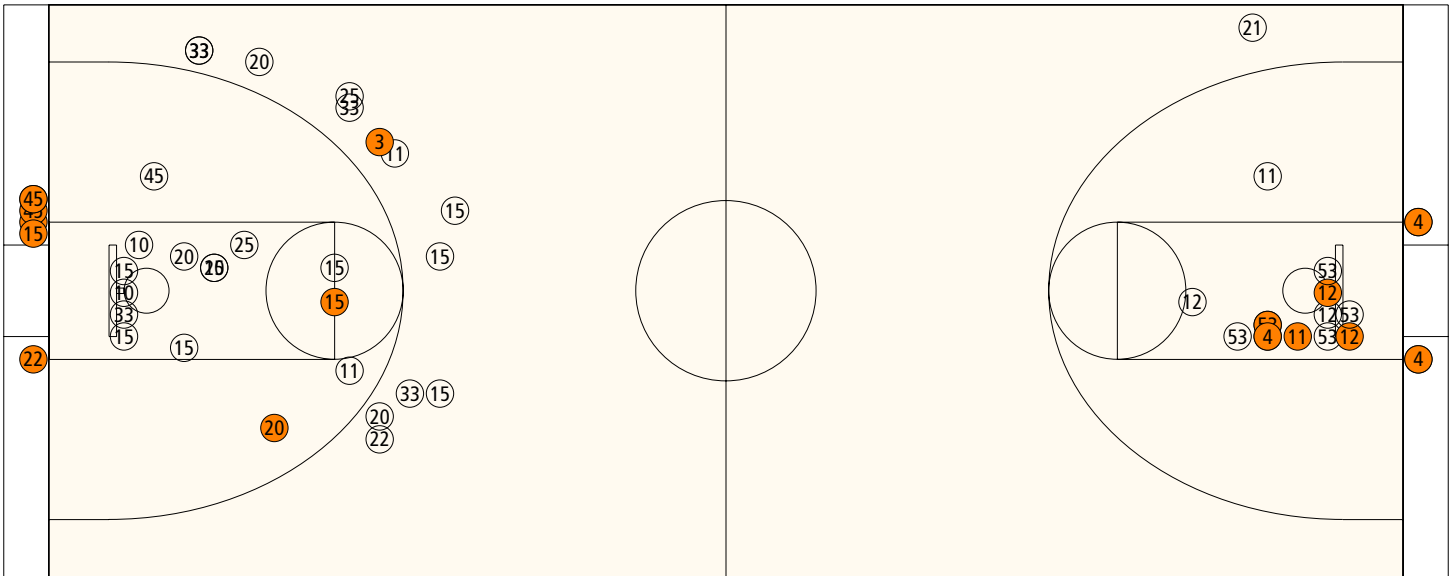
#### Rowan County

Shooting	Pts	Pts
2FG 4/14 (28.6%)	8	Pts/Shot 0.90
3FG 5/13 (38.5%)	15	2nd Eff Pts 2
TFG 9/27 (33.3%)		Pts off TO's 12
FT 5/8 (62.5%)	5	3Pt Eff +19.4
Scoring Distribution: 2FG 28.6% 3FG 53.6% FT 17.9%		

#### Breathitt County

Shooting	Pts	Pts
2FG 10/19 (52.6%)	20	Pts/Shot 1.04
3FG 0/1 (0.00%)	0	2nd Eff Pts 6
TFG 10/20 (50.0%)		Pts off TO's 6
FT 4/6 (66.7%)	4	3Pt Eff -35.1
Scoring Distribution: 2FG 83.3% 3FG 0.0% FT 16.7%		

### SECOND HALF



#### Rowan County

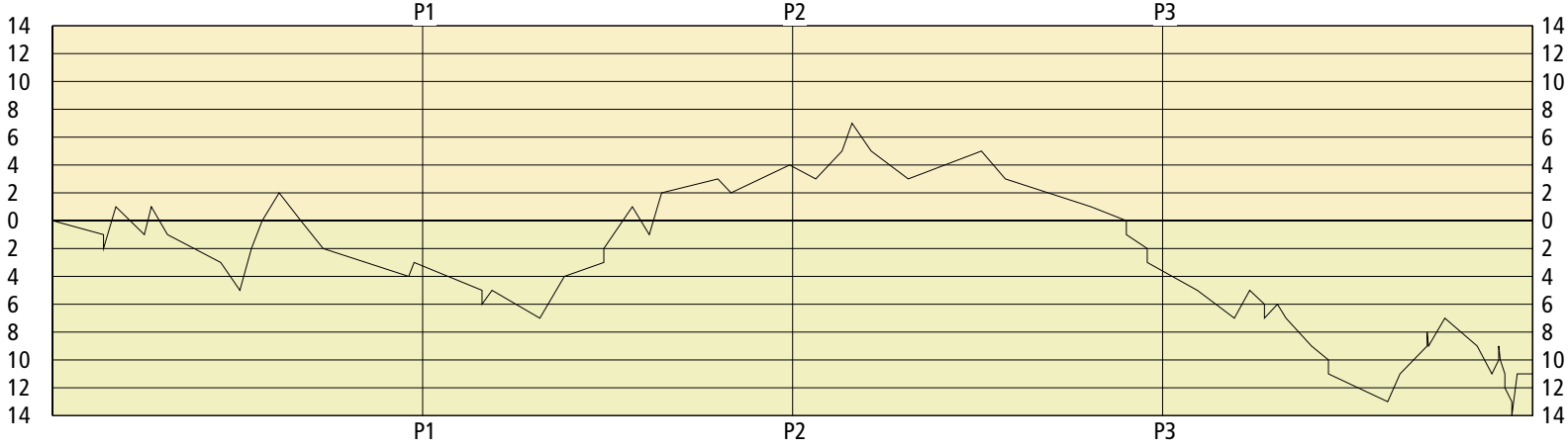
Shooting	Pts	Pts
2FG 7/21 (33.3%)	14	Pts/Shot 0.57
3FG 1/13 (7.69%)	3	2nd Eff Pts 3
TFG 8/34 (23.5%)		Pts off TO's 4
FT 4/7 (57.1%)	4	3Pt Eff -14.5
Scoring Distribution: 2FG 66.7% 3FG 14.3% FT 19.0%		

#### Breathitt County

Shooting	Pts	Pts
2FG 10/18 (55.6%)	20	Pts/Shot 1.20
3FG 0/1 (0.00%)	0	2nd Eff Pts 8
TFG 10/19 (52.6%)		Pts off TO's 6
FT 16/23 (69.6%)	16	3Pt Eff -37.0
Scoring Distribution: 2FG 55.6% 3FG 0.0% FT 44.4%		

Lady Vikings

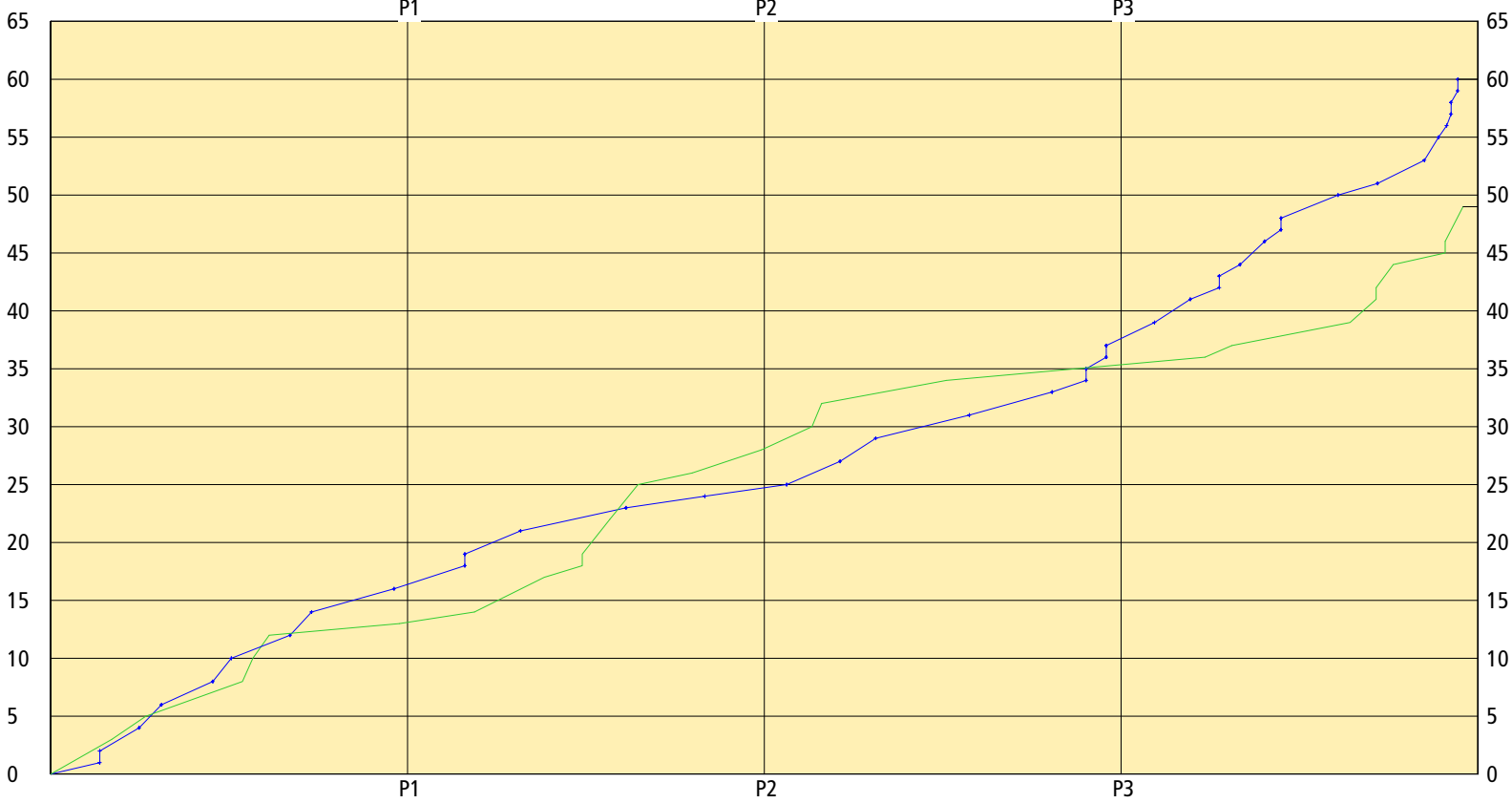
LEAD TIMELINE



Lady Cats

Lady Vikings  
 Lady Cats

SCORING TIMELINE



Largest Lead ROW 46 BREAT 60 (14 pts) Lead Changes 10 Number of Ties 3

**2008 Houchens Industries/KHSAA Girls' Sweet 16 - Play by Play Report - Scoring Only (pg 1)**  
**Rowan County Lady Vikings vs. Breathitt County Lady Cats**  
**Date: 03/12/2008 Time: 1:30 PM CST Site: Diddle Arena, Bowling Green, KY Attendance: 3298**

Name	Action	Action	Score	Clock	Diff	Name	Action	Action
J Brockman	Personal Foul		0-1	1 6:54	-1 (L1)	L Shouse	FT Made	
			0-2	1 6:54	-2	L Shouse	FT Made	
J Brockman	3Pt Made	N Barr Assist	3-2	1 6:38	+1 (L2)			
			3-4	1 6:01	-1 (L3)	L Shouse	Putback Made	
C Martin	FG Made	C Spurlock Assist	5-4	1 5:52	+1 (L4)			
			5-6	1 5:31	-1 (L5)	L Shouse	FG Made	B Haddix Assist
			5-8	1 4:22	-3	B Hardin	Layup Made	
			5-10	1 3:57	-5	A Southwood	FG Made	K Noble Assist
N Kissinger	3Pt Made	S Howard Assist	8-10	1 3:42	-2			
A Riddle	Putback Made		10-10	1 3:28	(T1)			
N Kissinger	Layup Made	J Brockman Assist	12-10	1 3:06	+2 (L6)			
			12-12	1 2:38	(T2)	K Noble	FG Made	
			12-14	1 2:09	-2 (L7)	B Haddix	Putback Made	
			12-16	1 0:18	-4	K Noble	FG Made	
C Martin	FT Made		13-16	1 0:11	-3	B Haddix	Personal Foul	

**End of Period Summary Lady Vikings 13 Lady Cats 16**

**Largest Lead: Lady Vikings 5 Lady Cats 10 (5 pts)**

**Lead in Period: Lady Vikings 5 Lady Cats 10 (5 pts)**

**4 for 4 oppo pts**

**4 for 2 pts**

**5/16 for 31.3 %**

**1/2 for 50.0 %**

**Turnovers**

**2nd Chances**

**Field Goals**

**Free Throws**

**Lead Changes: 7 Ties: 2**

**Lead Changes: 6 Ties: 2 (this period)**

**4 for 4 oppo pts**

**5 for 4 pts**

**7/16 for 43.8 %**

**2/2 for 100 %**

			13-18	2 6:43	-5	A Southwood	Layup Made	B Hardin Assist
A Riddle	Personal Foul		13-19	2 6:43	-6	A Southwood	FT Made	
C Spurlock	FT Made		14-19	2 6:30	-5	A Southwood	Personal Foul	
			14-21	2 5:28	-7	K Noble	FG Made	
C Martin	3Pt Made	C Spurlock Assist	17-21	2 4:56	-4			
A Riddle	FT Made		18-21	2 4:05	-3			
A Riddle	FT Made		19-21	2 4:05	-2			
J Brockman	3Pt Made	A Riddle Assist	22-21	2 3:28	+1 (L8)			
			22-23	2 3:06	-1 (L9)	B Haddix	FG Made	K Noble Assist
K Muncy	3Pt Made	J Brockman Assist	25-23	2 2:50	+2 (L10)			
A Riddle	FT Made		26-23	2 1:37	+3			
			26-24	2 1:20	+2	B Haddix	FT Made	
N Barr	Layup Made		28-24	2 0:04	+4			

**End of Period Summary Lady Vikings 28 Lady Cats 24**

**Largest Lead: Lady Vikings 14 Lady Cats 21 (7 pts)**

**Lead in Period: Lady Vikings 14 Lady Cats 21 (7 pts)**

**5 for 2 oppo pts**

**3 for 0 pts**

**4/11 for 36.4 %**

**4/6 for 66.7 %**

**Turnovers**

**2nd Chances**

**Field Goals**

**Free Throws**

**Lead Changes: 10 Ties: 2**

**Lead Changes: 3 Ties: 0 (this period)**

**12 for 8 oppo pts**

**1 for 2 pts**

**3/4 for 75.0 %**

**2/4 for 50.0 %**

A Riddle	Personal Foul		28-25	3 7:30	+3	K Noble	FT Made	
J Brockman	Layup Made		30-25	3 6:56	+5			
C Martin	Layup Made	C Spurlock Assist	32-25	3 6:43	+7			
			32-27	3 6:18	+5	K Noble	Layup Made	B Haddix Assist
			32-29	3 5:30	+3	K Noble	Putback Made	

**2008 Houchens Industries/KHSAA Girls' Sweet 16 - Play by Play Report - Scoring Only (pg 2)**  
**Rowan County Lady Vikings vs. Breathitt County Lady Cats**  
**Date: 03/12/2008 Time: 1:30 PM CST Site: Diddle Arena, Bowling Green, KY Attendance: 3298**

Name	Action	Action	Score	Clock	Diff	Name	Action	Action
N Barr	Layup Made	A Riddle Assist	34-29	3 3:55	+5			
			34-31	3 3:24	+3	K Noble	Putback Made	
			34-33	3 1:33	+1	B Haddix	FG Made	K Noble Assist
			34-34	3 0:47	(T3)	L Shouse	FT Made	
			34-35	3 0:47	-1 (L11)	L Shouse	FT Made	
			34-36	3 0:20	-2	L Shouse	FT Made	
			34-37	3 0:20	-3	L Shouse	FT Made	

**End of Period Summary Lady Vikings 34 Lady Cats 37**

**Largest Lead: Lady Vikings 14 Lady Cats 21 (7 pts)**  
**Lead in Period: Lady Vikings 32 Lady Cats 25 (7 pts)**  
**3 for 2 oppo pts**  
**6 for 0 pts**  
**3/17 for 17.6 %**  
**0/2 for 0.00 %**

**Turnovers**  
**2nd Chances**  
**Field Goals**  
**Free Throws**

**Lead Changes: 11 Ties: 3**  
**Lead Changes: 1 Ties: 1 (this period)**  
**7 for 4 oppo pts**  
**7 for 6 pts**  
**4/12 for 33.3 %**  
**5/7 for 71.4 %**

			34-39	4 7:15	-5	B Haddix	FG Made	B Hardin Assist
			34-41	4 6:27	-7	K Noble	FG Made	
A Riddle	FG Made		36-41	4 6:07	-5			
J Kiser	Personal Foul		36-42	4 5:48	-6	B Haddix	FT Made	
			36-43	4 5:48	-7	B Haddix	FT Made	
J Kiser	FT Made		37-43	4 5:31	-6			
			37-44	4 5:20	-7	A Southwood	FT Made	
			37-46	4 4:47	-9	L Shouse	FG Made	B Hardin Assist
			37-47	4 4:25	-10	A Southwood	FT Made	
			37-48	4 4:25	-11	A Southwood	FT Made	
			37-50	4 3:08	-13	A Southwood	Layup Made	K Noble Assist
C Spurlock	FG Made		39-50	4 2:52	-11			
C Spurlock	Layup Made		41-50	4 2:17	-9			
C Spurlock	FT Made		42-50	4 2:17	-8	B Hardin	Personal Foul	
C Martin	Personal Foul		42-51	4 2:15	-9	B Hardin	FT Made	
N Barr	Layup Made	C Spurlock Assist	44-51	4 1:54	-7			
			44-53	4 1:12	-9	A Southwood	FG Made	
			44-55	4 0:53	-11	A Southwood	Layup Made	K Noble Assist
C Spurlock	FT Made		45-55	4 0:44	-10			
C Spurlock	FT Made		46-55	4 0:44	-9			
			46-56	4 0:42	-10	K Noble	FT Made	
			46-57	4 0:36	-11	A Southwood	FT Made	
			46-58	4 0:36	-12	A Southwood	FT Made	
			46-59	4 0:27	-13	B Haddix	FT Made	
			46-60	4 0:27	-14	B Haddix	FT Made	
T Hamilton	3Pt Made		49-60	4 0:20	-11			

**End of Period Summary Lady Vikings 49 Lady Cats 60**

**Largest Lead: Lady Vikings 46 Lady Cats 60 (14 pts)**  
**Lead in Period: Lady Vikings 46 Lady Cats 60 (14 pts)**  
**2 for 4 oppo pts**  
**4 for 3 pts**  
**5/17 for 29.4 %**  
**4/5 for 80.0 %**

**Turnovers**  
**2nd Chances**  
**Field Goals**  
**Free Throws**

**Lead Changes: 11 Ties: 3**  
**Lead Changes: 0 Ties: 0 (this period)**  
**4 for 0 oppo pts**  
**2 for 2 pts**  
**6/7 for 85.7 %**  
**11/16 for 68.8 %**

No.	Breathitt County Lady Cats	Total FG		3-point		Free throw		Rebounds			F	TP	A	TO	BLK	STL	MIN	
		FG	FGA	FG	FGA	FT	FTA	Off	Def	Tot								
4	Amanda Southwood	5	8	0	1	6	7	0	1	1	4	16	0	3	0	2	23:45	
5	Ashley White	0	0	0	0	0	0	0	0	0	0	0	0	0	0	0	DNP	
11	Brittany Haddix	4	8	0	0	5	6	1	8	9	3	13	2	3	1	0	28:49	
12	Kendall Noble	7	10	0	0	2	5	5	7	12	2	16	5	9	5	1	31:33	
20	Paige Hamblin	0	0	0	0	0	0	0	0	0	0	0	0	0	0	0	DNP	
30	Brittany Hardin	1	2	0	0	1	3	0	4	4	3	3	3	9	0	3	31:33	
53	Lena Shouse	3	10	0	0	6	8	5	9	14	2	12	0	2	1	2	31:13	
21	Brianna Deaton	0	1	0	1	0	0	0	1	1	0	0	0	0	0	1	10:01	
33	Eden Keeton	0	0	0	0	0	0	0	0	0	0	0	0	0	0	0	1:45	
23	Kristin Bowen	0	0	0	0	0	0	0	0	0	0	0	0	1	0	0	0:27	
40	Victoria Shouse	0	0	0	0	0	0	0	0	0	0	0	0	0	0	0	0:27	
42	Emily White	0	0	0	0	0	0	0	0	0	0	0	0	0	0	0	0:27	
22	Shania Hollan	0	0	0	0	0	0	0	0	0	0	0	0	0	0	0	DNP	
32	Courtney Fugate	0	0	0	0	0	0	0	0	0	0	0	0	0	0	0	DNP	
<b>Team (Included in Totals)</b>								<b>4</b>	<b>1</b>	<b>5</b>								
<b>Totals</b>		<b>20</b>	<b>39</b>	<b>0</b>	<b>2</b>	<b>20</b>	<b>29</b>	<b>15</b>	<b>31</b>	<b>46</b>	<b>14</b>	<b>60</b>	<b>10</b>	<b>27</b>	<b>7</b>	<b>9</b>	<b>160</b>	

Total FG%: 1st half 10 - 20 (50.0%) 2nd half 10 - 19 (52.6%) Game 20 - 39 (51.3%)  
 3Pt FG%: 1st half 0 - 1 (0.00%) 2nd half 0 - 1 (0.00%) Game 0 - 2 (0.00%)  
 FT%: 1st half 4 - 6 (66.7%) 2nd half 16 - 23 (69.6%) Game 20 - 29 (69.0%)

Deadball  
rebounds  
2

No.	Rowan County Lady Vikings	Total FG		3-point		Free throw		Rebounds			F	TP	A	TO	BLK	STL	MIN	
		FG	FGA	FG	FGA	FT	FTA	Off	Def	Tot								
3	Tierra Hamilton	1	1	1	1	0	0	0	0	0	0	3	0	0	0	0	0:27	
4	Kaitlyn Muncy	1	1	1	1	0	0	0	0	0	1	3	0	0	0	0	4:16	
10	Jenna Kiser	0	3	0	1	1	2	2	1	3	1	1	0	0	0	0	8:33	
11	Stefanie Howard	0	3	0	1	0	0	1	0	1	0	0	1	0	0	0	9:03	
15	Cassidi Spurlock	2	15	0	5	4	5	4	1	5	5	8	4	2	0	1	27:30	
20	Amber Riddle	2	6	0	2	3	4	2	5	7	4	7	2	0	0	1	27:34	
25	Jennifer Brockman	3	8	2	4	0	0	3	1	4	5	8	2	6	0	6	22:49	
45	Nicole Barr	3	6	0	0	0	2	1	1	2	1	6	1	0	0	2	22:07	
22	Caitlin Martin	3	7	1	3	1	2	1	2	3	3	8	0	2	0	0	18:18	
33	Natasha Kissinger	2	10	1	8	0	0	2	0	2	1	5	0	2	0	4	15:37	
23	Morgan Hardin	0	1	0	0	0	0	0	0	0	1	0	0	0	0	0	2:11	
32	Keshia McClain	0	0	0	0	0	0	0	0	0	0	0	0	0	0	0	0:27	
35	Krysta Barker	0	0	0	0	0	0	0	0	0	0	0	0	0	0	0	0:27	
44	Beth Richmond	0	0	0	0	0	0	0	0	0	0	0	0	0	0	0	0:27	
24	Adri Neeley	0	0	0	0	0	0	0	0	0	1	0	0	0	0	0	0:14	
<b>Team (Included in Totals)</b>								<b>1</b>	<b>0</b>	<b>1</b>								
<b>Totals</b>		<b>17</b>	<b>61</b>	<b>6</b>	<b>26</b>	<b>9</b>	<b>15</b>	<b>17</b>	<b>11</b>	<b>28</b>	<b>23</b>	<b>49</b>	<b>10</b>	<b>14</b>	<b>0</b>	<b>14</b>	<b>160</b>	

Total FG%: 1st half 9 - 27 (33.3%) 2nd half 8 - 34 (23.5%) Game 17 - 61 (27.9%)  
 3Pt FG%: 1st half 5 - 13 (38.5%) 2nd half 1 - 13 (7.69%) Game 6 - 26 (23.1%)  
 FT%: 1st half 5 - 8 (62.5%) 2nd half 4 - 7 (57.1%) Game 9 - 15 (60.0%)

Deadball  
rebounds  
2

Technical Fouls: None

Attendance: 3298

Officials: Mark Howell, Ellen Carver, Lance Wilson

Score by Period	1st	2nd	3rd	4th	Final	Record	Overall	Conf
Breathitt County Lady Cats	16	8	13	23	<b>60</b>	Lady Cats		
Rowan County Lady Vikings	13	15	6	15	<b>49</b>	Lady Vikings		

Lady Vikings Lady Cats		Lady Vikings Lady Cats		Lady Vikings Lady Cats	
Points off Turnovers	16	12	Second Effort Points	5	14
Points in the Paint	18	26	3 Point Points	18	0
3pt Efficiency	+2.1	-36.0	Points/Shot	0.72	1.13
Largest Lead	46	60 (14 pts)	Lead Changes	10	
			Bench Points	12	0
			Free Throw Points	9	20
			Defensive Stops	38	45
			Number of Ties	3	

Game comments: None